

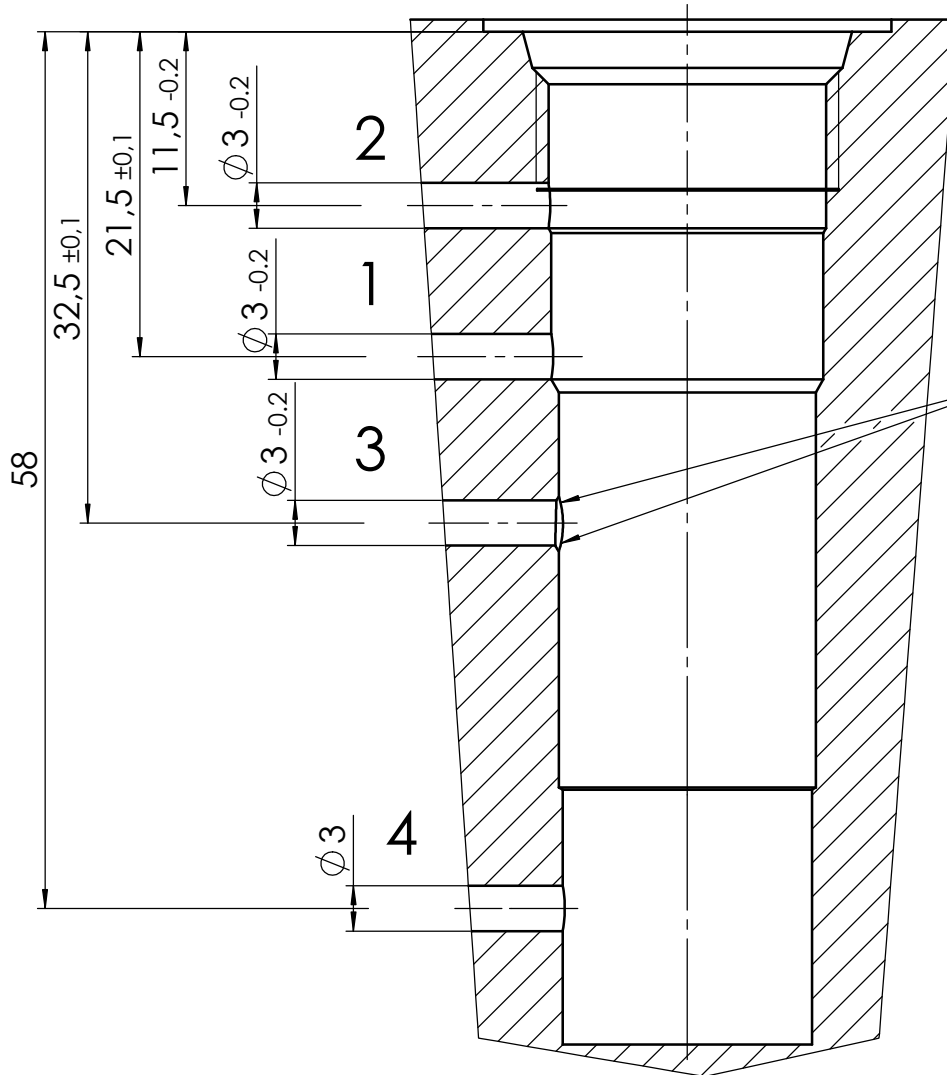
we engineer your progress

Dimensions in millimeters
 workpiece edge DIN 6784
 undimensioned workpiece edge -0.3
 undimensioned inner edge +0.2

18 H8	$\begin{matrix} +0.027 \\ 0 \end{matrix}$
17 H8	$\begin{matrix} +0.027 \\ 0 \end{matrix}$
fitting	diameter

Index / Datum	Änd. Nr.	Bearbeitet	Geprüft	Änderung
01 / 30.10.17	17.140.04	Budde	Wiesner / Dörk	Bohrung $\phi 16.5$ flach. Tiefe 67+1. Nut $\phi 19$ entfällt
heyen	prepared on 07.08.17	changed on 17.11.2023	ID-Nr.8.00255	index: 01 page 1 of 2

Hole



Dieser Bereich
sauber entgratet
(Kugelfräser)

we engineer your progress

Dimensions in millimeters