

1 Product Description

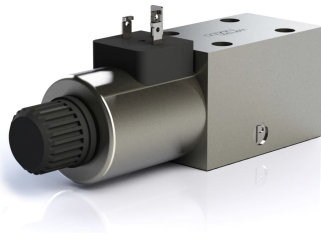
With directional control valves 4/3 or 4/2 double-acting consumers or piloting signals can be operated.

4/2: In the idle position, the consumer is enabled in one direction. In the activated position the consumer is operated in the other direction. The valves vary in the actuation (manual, electric or hydraulic), in the hydraulic connections and in the overlap position from the idle to the activated position.

4/3: In the center- position, the consumer usually is not activated. In the two activated positions the consumer is operated in one or the other direction. The valves vary by the actuation (manual, electric or hydraulic), by the hydraulic connections in the central position and the overlap positions from center-position to the activated positions.

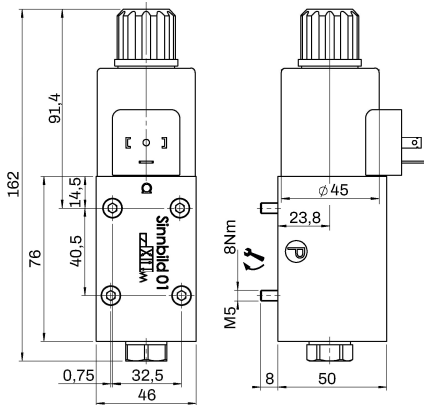
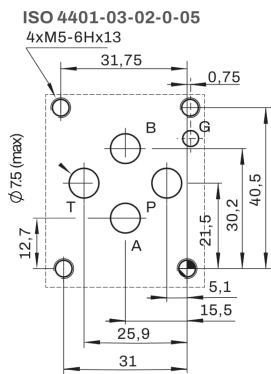
1.1 Mounting location

Directional Control Valves 4/3 and 4/2 are to be flanged directly onto control valves or connected with special mounting plates.



2 Technical Data

Criterion	Unit	Value
Type		Directional Spool Valve
Installation position		any
Max. volume flow	l/min (GPM)	80 (21,1)
Max. operating pressure, port: P, A, B	bar (PSI)	350 (5080)
Max. operating pressure, port: T	bar (PSI)	210 (3050)
Weight	Kg (lbs)	1 Magnet: 1,6 (3.52) - 2 Magnete: 2.2 (4.85)
Nominal size		DIN NG06, CETOP 03, NFPA D03
Connection diagramm		ISO 4401, DIN 24340 (CETOP 03)
Fluid		Mineral oil (HL, HLP) conforming with DIN 51524, other fluids upon request Filtering conforming with NAS 1638, class 9, with minimum retention rate $\beta_{10} \geq 75$
Fluid temperature range (NBR)	°C (°F)	-25 ... +70 (-13 ... +158)
Ambient temperature:	°C (°F)	-25 ... +50 (-13... +122)
Max. switching frequency	1/h	15 000
Switch-on time	%	100
Switching time	ms	ON: 15 - 50, OFF: 10 - 50

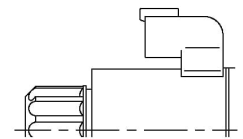
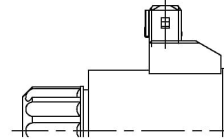
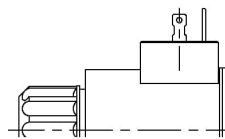


Electrical connection types:

Angled connector Typ EN 175301-803

Typ AMP JUNIOR plug on request

DEUTSCH plug DT04-2P on request



3 Ordering Information

Part Nr.	Description	Switching symbol	Special version	Code	Volt
285.641.000.6	Way Valve, NG6, S4/2		DIN Stecker	001	24
285.627.000.6			DEUTSCH Stecker DT04-2P		12
285.628.000.6			Q _{max} = 40l/min (10.5 usgal/min), P _{max} = 420bar (6000psi)		24
271.310.301.8E			DIN Stecker		24
285.618.000.6	Way Valve, NG6, S4/2		DIN Stecker	006	24

The versions listed below are available as standard. Further versions as part of the options given on the type code can be configured upon request.

4 Installation

General remarks

- Installations- und Sicherheitshinweise des Maschinenherstellers beachten
- All installation and safety information from the machine manufacturer are to be observed.
- Only technically permitted changes are to be made on the machine.
- The user must ensure that the device is suitable for the respective application.
- Application exclusively for the range of application specified by the manufacturer.
- Before installation or dismantling, the hydraulic system is to be depressurized.
- Settings are to be made by qualified personnel only.
- Opening is only to be performed with the approval of the manufacturer, otherwise the warranty is invalidated.
- No responsibility is taken for the correctness of these connection recommendations, the functionality and the technical details of the machine must be checked.

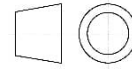
Montage - Bauraum

- Observe the connections.
- Observe the strength category and torque (see appendix) of the fastening bolts.
- Do not damage seals and flange surface.
- The air must be exhausted from the hydraulic system.
- The space necessary to remove the plug per EN 175301-803, design type AF is at least 15 mm.
- The torque for the screw M3 of the plug has to be 0.5 to 0.6 Nm.
- The torque for the screw (M5) = 8 Nm.

5 Notes, Standards and Safety Requirements

General remarks

- The views in drawings are shown in accordance with the European normal projection variant
- A comma (,) is used as a decimal point in drawings
- All dimensions are given in mm



Standards

The following standards must be observed when installing and operating the valve:

- EN 563, Temperatures on accessible surfaces

6 Accessories

- Junior Timer Plug, part no. 340.305.900.6
- Angle plug connection ISO 4400, part no. 340.201.900.6 gray version
- Angle plug connection ISO 4400, part no. 340.202.900.6 black version
- Coil 285.704.000.6 (24V)
- Coil 285.703.000.6 (12V)