

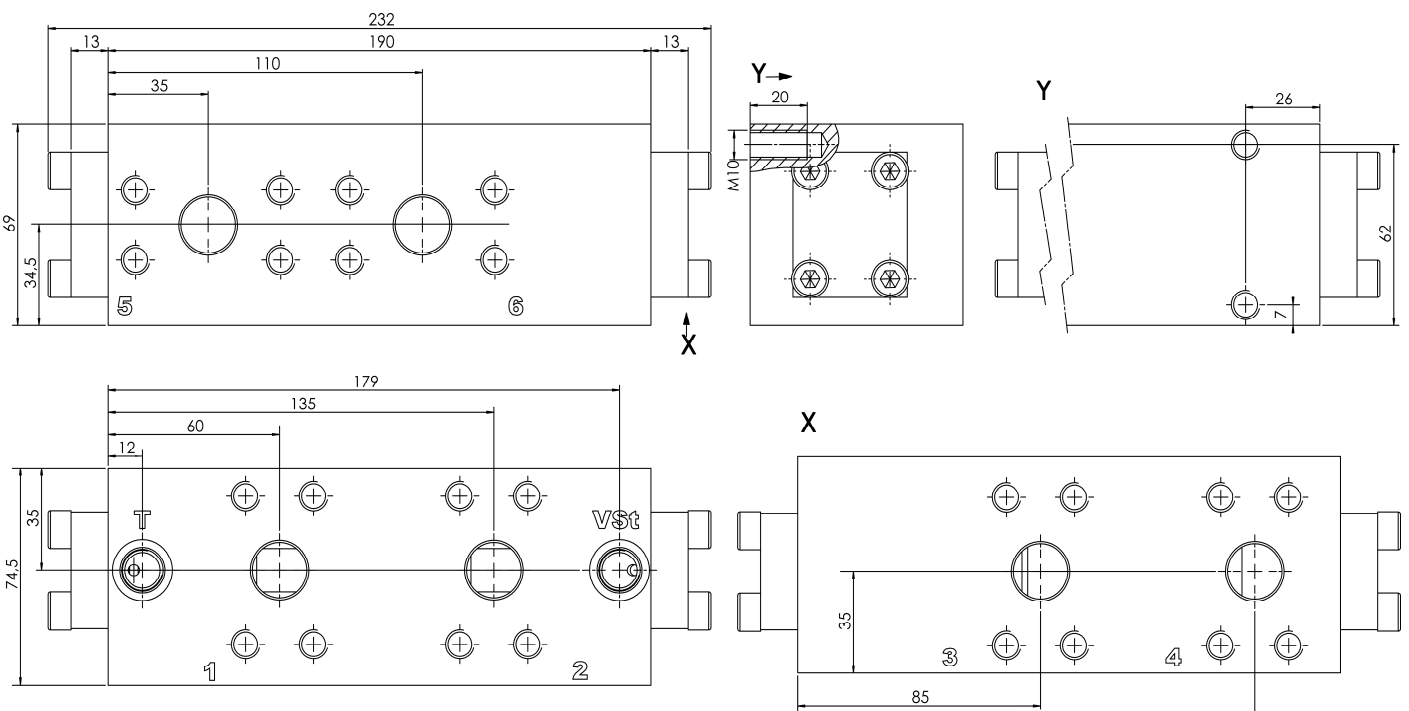
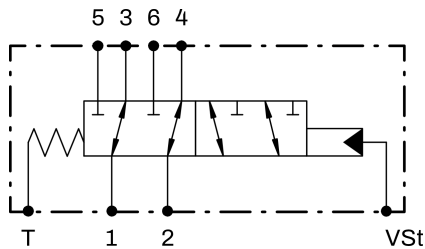


1 Product Description


With a 6/2 directional control valve, the volume flow downstream of a main section can be distributed to 2 consumers as required. Without a center position, the main consumer is controlled when the directional control valve is not switched. In the switched state, the new additional consumer is operated. The switchover takes place hydraulically.

2 Technical Data

Criterion	Unit	Value
Installation position		any
Max. volume flow	l/min (GPM)	300 (79,3)
Max. operating pressure:		
1 & 2, 3 & 4	bar (PSI)	485 (7034)
5 & 6	bar (PSI)	460 (6672)
VSt	bar (PSI)	45 (653)
Switching pressures	Start of switching 4 bar (58 PSI), at least 12 bar (174 PSI) when permanently switched	
Weight	Kg (lbs)	6,89 (15,19)
Body material	EN-GJS-400-15U	
Ports:		
1,2,3,4,5,6	SAE 3/4" (J518 Code 62) DIN ISO 6162	
T, VSt	M14x1,5 DIN ISO 6149-1	
Tightening torques 1,2,3,4,5,6	Nm (lbft)	70 (51,6)
Hydraulic fluid	mineral oil (HL, HLP) conforming with DIN 51524, other fluids upon request	
Hydraulic fluid pressure range	°C (°F)	-20 ... +80 (-68 ... +176)
Ambient temperature	°C (°F)	< +50 (+122)
Viscosity range	mm ² /s	2,8 - 500
Contamination grade	Filtering conforming with NAS 1638, class 9, with minimum retention rate $\beta_{10} \geq 75$	



3 Installation

- General remarks
- Observe the installation and safety instructions of the construction machine manufacturer.
- Only technically permissible modifications may be made to the construction machine.
- The user must ensure that the device is suitable for its intended use.
- Use only for the purpose intended by the manufacturer.
- The hydraulic system must be depressurized before assembly/disassembly.
- The valve may only be adjusted by qualified personnel.
- The valve may only be opened with the manufacturer's permission, otherwise the warranty claim will be invalidated.
-  **Tightening torques of 70 Nm (51,6 lbf^t) it is strongly required to keep the torques for the ports 1,2,3,4,5,6 connections, to ensure proper functionality!**

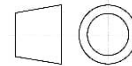
Installation space

- Observe the connection designations.
- Observe the strength class and tightening torque of the fastening screws.
- Do not damage the seals and flange surface.
- The hydraulic system must be vented.

4 Notes, Standards and Safety Requirements

General remarks

- The views in drawings are shown in accordance with the European normal projection variant
- A comma (,) is used as a decimal point in drawings
- All dimensions are given in mm



Standards

The following standards must be observed when installing and operating the valve:

- EN 563, Temperatures on accessible surfaces

5 Accessories