

1 Product Description



The manually operated flow control valve divides the input quantity into a smaller output quantity and is used to supply a hydraulic consumer independent of the load pressure. The valve can be used, for example, to set the desired speed for a scraper floor drive.

The incoming volume flow (P) is reduced for the consumer (A) depending on the setting of the handwheel. The remaining volume flow is directed to the tank (T).

The setting is made by adjusting the handwheel. The consumer can be switched manually in the other direction by pressing the actuating button.

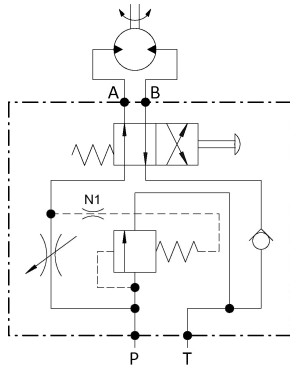
Characteristics

- Compact design
- All ports are on the same side of the valve body
- Outlet flow manually adjustable
- Manual reverse mode

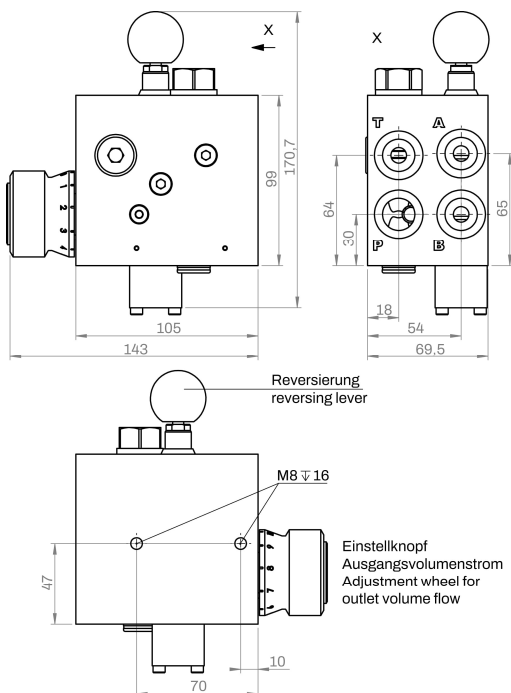
Mounting location Recommendation

The valve is installed into the inlet line between pump and user that kind, that the manual controls can be reached easily.

2 Technical Data



Criterion	Unit	Value
Max. tank pressure	Bar (PSI)	< 1 (14,50)
Maximum input pressure Connections P, A, B, T (G1/2 ISO1179-1)	bar (PSI)	220 (3191)
Qmax	l/min (GPM)	60 (15,85)
Weight	Kg (lb)	4,9 (10,80)
Fluid	Mineral oil (HL, HLP) conforming with DIN 51524, other fluids upon request Filtering conforming with NAS 1638, class 9 with minimum retention rate $\beta_{10} > 75$	
Hydraulic fluid temperature	°C (°F)	-20 ... +80 (-68 ... +176)
Environmental temperature	°C (°F)	< +50 (+122)
Viscosity range	mm ² /s (cSt)	2,8 – 500 (2,8 – 500)



The adjustment wheel has a 10-stage scale. With an inlet volume flow of 70 l/min the outlet flow at the dif-ferent stages results in:

Scale	1	2	3	4	5	6	7	8	9	10
Outlet flow (l/min)	0	2	4	7	12	21	31	42	56	68

Applications:

- Harvesting machines
- Municipal vehicles
- Forestry machines
- Towed work machines
- Construction machines

3 Installation

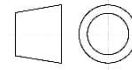
Allgemeine Hinweise

- Installations- und Sicherheitshinweise des Maschinenherstellers beachten
- All installation and safety information from the machine manufacturer are to be observed.
- Only technically permitted changes are to be made on the machine.
- The user must ensure that the device is suitable for the respective application.
- Application exclusively for the range of application specified by the manufacturer.
- Before installation or dismantling, the hydraulic system is to be depressurized.
- Settings are to be made by qualified personnel only.
- Opening is only to be performed with the approval of the manufacturer, otherwise the warranty is invalidated.
- No responsibility is taken for the correctness of these connection recommendations, the functionality and the technical details of the machine must be checked.

4 Notes, Standards and Safety Requirements

General remarks

- The views in drawings are shown in accordance with the European normal projection variant
- A comma (,) is used as a decimal point in drawings
- All dimensions are given in mm



Standards

The following standards must be observed when installing and operating the valve:

- EN 563, Temperatures on accessible surfaces
- EN 982, Safety requirements for fluid power systems and their components.