

## Table of Contents

<b>1</b>	<b>Product Description</b> .....	<b>2</b>
1.1	Application .....	2
1.2	Mounting location .....	2
<b>2</b>	<b>Function</b> .....	<b>2</b>
2.1	Characteristics .....	2
2.2	Einstellmöglichkeiten Adjustment options .....	2
<b>3</b>	<b>Technical Data</b> .....	<b>3</b>
<b>4</b>	<b>Ordering Information</b> .....	<b>3</b>
<b>5</b>	<b>Description of Characteristics in Accordance with Type Code</b> .....	<b>4</b>
5.1	Product group .....	4
5.2	Connections .....	4
5.3	Spool .....	4
5.4	Pressure setting .....	4
5.5	Actuation .....	4
5.6	Opening pressure .....	4
5.7	Setting compensation .....	4
5.8	Lowering speed adjustable .....	4
<b>6</b>	<b>Installation</b> .....	<b>4</b>
6.1	General remarks .....	4
6.2	Connection recommendations .....	4
6.3	Installation – space .....	5
6.4	Setting „opening pressure“ .....	5
6.5	Setting Pressure limitation .....	5
6.6	Setting Maximum lowering speed .....	5
6.7	Dimensions .....	6
<b>7</b>	<b>Notes, Standards and Safety Requirements</b> .....	<b>7</b>
7.1	General remarks .....	7
7.2	Standards .....	7
7.3	Safety requirements .....	7
<b>8</b>	<b>Zubehör</b> .....	<b>7</b>

### 1 Product Description

In case of a pipe or tube rupture load control valves avoid uncontrolled movement of the cylinder. In some countries these valves are required by law when a construction machine is used for load lifting purposes. They also serve for an exact and stable positioning of the boom and enable sensitive and even movement processes. Load control valves can compensate for leakages on the main control valves in older construction machines. WESSEL load control valves stand for an excellent sensitivity and a very direct response to the handle's stroke. In any case they are leakage free. The design of this load control valve is standard and can fit most of the standard applications.

#### 1.1 Application

Boom- stick- and bucket cylinders in excavators

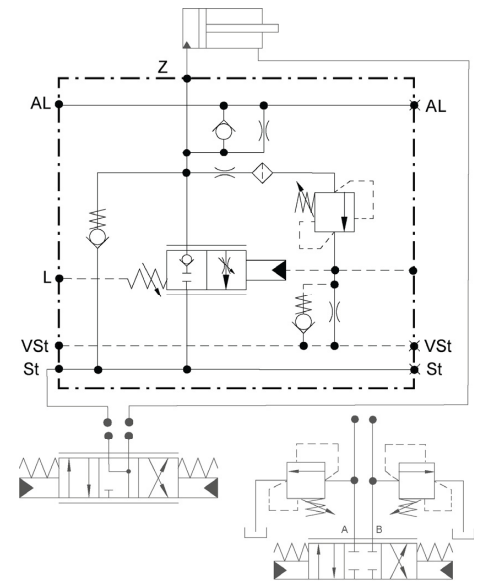
#### 1.2 Mounting location

The load control valve is installed in the line to be protected between the main control valve and the hydraulic cylinder and is flanged directly on the cylinder. Additional pipework and piping between load control valve and cylinder is not permissible.

### 2 Function

The Load Holding Valve is closed and leakage free in its unpiloted position. When deploying the cylinder, the hydraulic fluid is fed to the cylinder via a check valve.

Pilot control pressure in the VSt connection uses control surfaces to open the Load Holding Valve piston against a pressure spring and introduces a jolt-free lowering movement. As the pilot control pressure continues to increase, the entire control cross-section of the Load Holding Valve piston is released and the maximum lowering speed is reached. If a hose or pipe breaks, the Load Holding Valve controls the maximum lowering speed to the setting defined with the control lever and the maximum specified lowering speed is not exceeded. By moving the control lever into its neutral position further lowering is prevented. The Load Holding Valve piston is load-compensated so that no closing force from the return pressure affects the Load Holding Valve piston. The secondary valve is connected with connection Z and opens up to connection VSt when the defined maximum pressure is achieved, which opens the Load Holding Valve piston and allows pressure to be decreased from Z to St. A pressure limiting valve is required if the main directional control valve has a closed central position.



#### 2.1 Characteristics

- Meets the requirements of standards: DIN24093, ISO 8643, EN 474
- Start opening independent of the load pressure
- Sensitive control with low hysteresis
- Leakage-free
- Load control valve piston pressure-compensated
- Symmetrical connections to/from the control valve on the right and the left side of the load control valve
- Can be flanged directly onto the cylinder connection
- Surge line for parallel operation for the minimization of the cylinder pressure differences
- Pressuring limiting valve with upstream filter sieve for protecting the cylinder

#### 2.2 Einstellmöglichkeiten Adjustment options

- Opening Start of the Load Control Valve
- Opening Start of the Pressure Limiting Valve Adjustable
- Lowering Speed Limiting Adjustable (optional)

### 3 Technical Data

Criterion		Unit	Value	
			SAE 3/4"	SAE 1"
Z, ST			(DIN ISO 6162-1,SAE J518/1(CODE61) 3000psi & DIN ISO 6162-2,SAE J518/2(CODE62) 6000psi)	
Max. operating pressure		bar	420	
Range pressure setting		bar	200 – 420	
Pressure setting			See type code feature 04: Pressure setting	
Max. volume flow			See type code feature 03: Spool	
Weight		kg	6,8	7,8
Opening pressure		bar	6 - 10	
Full opening		bar	Opening pressure + leak oil pressure + 17	
Connection		Connection sizes		Pmax
Z	actuator port	DIN ISO 6162-2,SAE J518/2 (CODE62)	bar	420
ST	supply port		bar	350
VSt	pilot port	G 3/4 ISO 1179-1	bar	50
Al	compensation port	G 3/4 ISO 1179-1	bar	420
L	leakage port	G 3/4 ISO 1179-1	bar	< 1,0
Installation position				Any
Hydraulic fluid			Mineral oil (HL, HLP) conforming with DIN 51524, other fluids upon request	
Hydraulic fluid temperature range		°C	-20 – +80	
Ambient temperature:		°C	< +50	
Viscosity range		mm <sup>2</sup> /s	2.8 – 500	
Contamination grade			Filtering conforming with NAS 1638, class 9, with minimum retention rate β <sub>10</sub> ≥75	
Surface protective			Zink coated	

### 4 Ordering Information

00	LHB	01	4N	02	03	04	05	HYPO3B	06	07	00	08
00	Product group	Load Control Valve Boom										LHB
01	Variant	Step variant										4N
02	Connections	Cylinder	SAE 3/4" – (DIN ISO 6162-1,SAE J518/2 (CODE61) SAE- 3000PSI) SAE 1" – (DIN ISO 6162-1,SAE J518/2 (CODE61) SAE- 3000PSI) SAE 3/4" – (DIN ISO 6162-2,SAE J518/2 (CODE62) SAE- 6000PSI) SAE 1" – (DIN ISO 6162-2,SAE J518/2 (CODE62) SAE- 6000PSI)									04C 04E 05C 05E
03	Spool	Design of the spool optimized for the specified volume flow; [l/min]	Versions SAE 3/4" and 1"							150 200 250 300 350 400	only Version SAE 3/4" only Version SAE 1"	350 400
04	pressure setting	Pressure relief valve: Value refers to a flow rate of 10 l/min	200 bar bis 420 bar, standard 420 bar							XXX		
05	Actuation	Hydraulically proportional, connection G1/4									HYP03B	
06	Opening pressure	opens at a pilot control pressure as of 6 bar to 10 bar, standard 6 bar = 006									XXX	
07	Setting compensation	No compensation									00	
08	Maximum lowering speed adjustable	No Yes									0 1	

Unfortunately, various configurations cannot be implemented for technical reasons. If you have any questions, please contact us for advice.

### 5 Description of Characteristics in Accordance with Type Code

#### 5.1 Product group

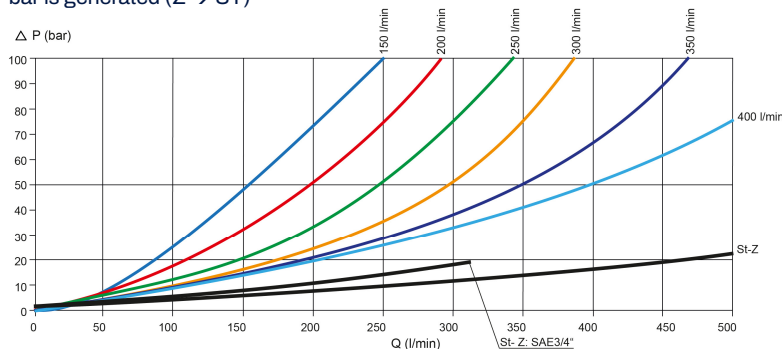
Stepped housing

#### 5.2 Connections

The valves are flanged directly on the cylinder to be protected (connection Z). The supply line from the control valve takes place via the connection ST. As a rule, both connections are designed the same (SAE size).

#### 5.3 Spool

The control slider is calculated to the maximum desired volume flow (Z → ST). Criterion: Nominal volume flow, in which a pressure loss ( $\Delta p$ ) of maximum 50 bar is generated (Z → ST)



#### 5.4 Pressure setting

Setting of the pressure restriction valve for protecting cylinder (connection Z). The operating pressure of the valve at input ST and output Z must not exceed 420 bar for all versions.

#### 5.5 Actuation

Setting of the pressure restriction valve for protecting cylinder (connection Z). The operating pressure of the valve at input ST and output Z must not exceed 420 bar for all versions.

#### 5.6 Opening pressure

Level of the pilot control pressure (connection VST), in which the valve opens and the cylinder begins its lowering movement.

#### 5.7 Setting compensation

**Compensation** of the impact of load pressure on the lowering speed. The setting is performed in the factory and cannot be changed.

**No compensation:** The load pressure had no impact on the opening cross-section of the hose rupture valve. Higher load pressure – higher lowering speed

#### 5.8 Lowering speed adjustable

In addition to the design of the control spool for a maximum volume control, the lowering speed can be further limited by this setting.

### 6 Installation

#### 6.1 General remarks

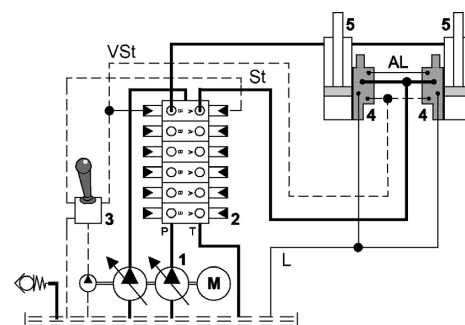
- Observe all installation and safety information of the construction machine manufacturer.
- Only technically permitted changes are to be made on the construction machine.
- The user has to ensure that the device is suitable for the respective application.
- Application exclusively for the range of application specified by the manufacturer.
- Before installation or dismantling, the hydraulic system is to be depressurized.
- Settings are to be made by qualified personnel only.
- May only be opened with the approval of the manufacturer, otherwise the warranty is invalidated.
- The included connection recommendations are not guaranteed. The functionality and the technical specifications of the construction machine must be checked.

#### 6.2 Connection recommendations



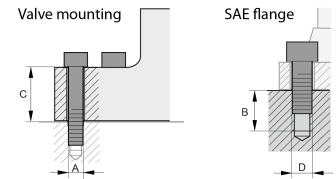
**CAUTION!** Hydraulic hoses are not to come into contact with the hose rupture valve because otherwise they are subject to thermal damaging. Ensure that standards EN 563 and EN 982 are observed.

- 1 Pump
- 2 Main control device
- 3 Pilot control unit
- 4 Hose rupture valve
- 5 Cylinder



### 6.3 Installation – space

- Observe the connection labels
- Observe the strength category and torsional torque of the clamp bolts
- Do not damage seals and flange surface
- The air must be exhausted from the hydraulic system
- Observe the recommended installation screws



	Thread A	Thread D	Strength class	Thread depth B (mm)	Tightening torque Valve installation (Nm)	Tightening torque SAE flange (Nm) DIN ISO 6162-1, SAE J518/1 3000psi	Tightening torque SAE flange (Nm) DIN ISO 6162-2, SAE J518/2 6000psi	C (mm)
SAE 3/4"	M10	M10x1,5	10.9	16,5	71	70	70	38
SAE 1"	M12	M12x1,75	10.9	21,5	123	70	130	39

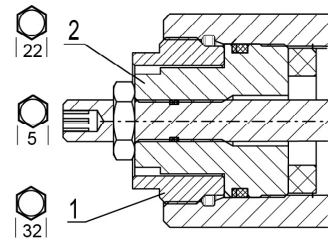
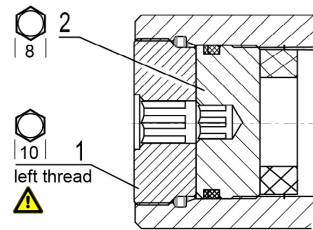
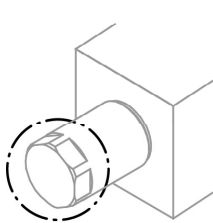
### 6.4 Setting „opening pressure“

The opening pressure of the load control valve is set in the factory according to type code. A setting during startup is not necessary and, for safety purposes, may only be performed by trained technicians using suitable measuring equipment.

The setting of the opening pressure, that is the level of the pilot control pressure, from which the load control valve opens to lower the cylinder, is set on the spring cap unit. Depending on the manufacture date of the hose rupture valve, there are two versions of the setting in the cycle:

without setting the max. Lowering speed

with setting the max. Lowering speed



**ATTENTION** During operation, the valve can heat up to the oil temperature. Remove seal (factory status).

- Loosen the AF10 (1) counter-nut, **ATTENTION: left-hand thread**
- The opening start of the hose rupture valve must be approximately 0.5 bar above the opening start of the main control unit spool.
- Increase: Turn the set-screws AF8 (2) clockwise.
- Decrease: Turn the set-screws AF8 (2) counter-clockwise.
- An adjustment of 1mm thread corresponds a variation of the opening pressure fo 2,9 bar.
- Tighten the counter-nut AF10 (1).

### 6.5 Setting Pressure limitation

The pressure limitation of the load control valve is set in the factory according to type code. A setting during startup is not necessary and, for safety purposes, may only be performed by trained technicians using suitable measuring equipment.

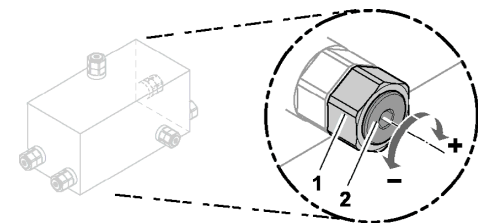
The maximum operating pressure of the pressure valve depends on the maximum operating pressure of the machine. Observe the technical data. The pressure valve is in one of the indicated positions.



**ATTENTION**

During operation, the valve can heat up to the oil temperature.

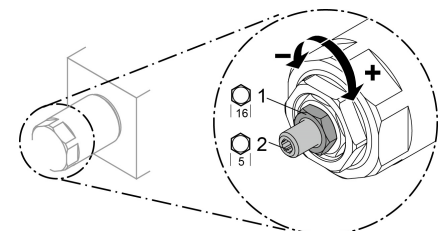
- Undo the counter-nut AF19 (1).
- The operating pressure is set up (see table).
- Increase: Turn the set-screw AF5 (2) clockwise.
- Decrease: Turn the set-screws AF5 (2) counter-clockwise.
- 1 revolution corresponds with 84 bar
- Settings over 420 bar (DIN ISO 6162-2, SAE J518/2 (CODE62)) are not permissible
- Tighten the counter-nut AF19 (1).



### 6.6 Setting Maximum lowering speed

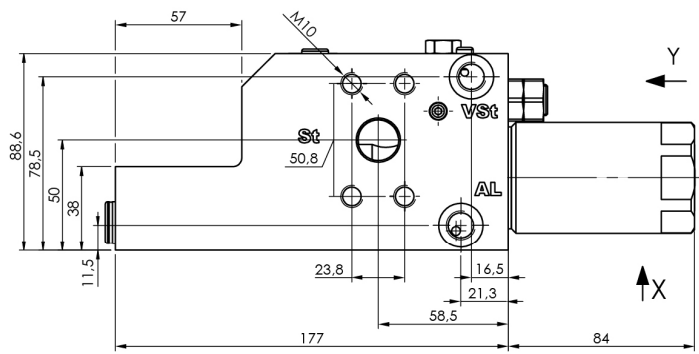
The setting of the lowering speed limit (if present) also takes place on the spring cap unit. This setting can only be made when the opening pressure has been set correctly.

- Undo the counter-nut (1).
- Screw in the set-screws (4) clockwise until the stop position is detected.
- Turn the set-screw (2) counter-clockwise until the desired maximum lowering speed is reached.
- Setting screw (2) at 6 unscrewed means maximum lowering speed, one revolution = 1mm. (Please do not unscrew further)
- By screwing the setting screw (2) in, the load control valve is limited in opening travel, which sets the lowering speed.
- Tighten counter-nut (1), tightening torque 30 Nm.

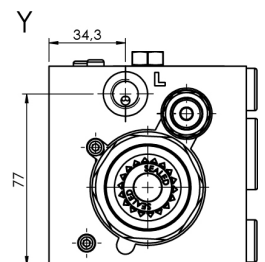
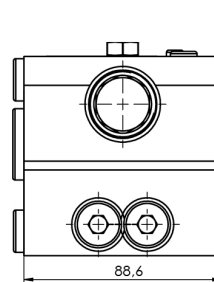
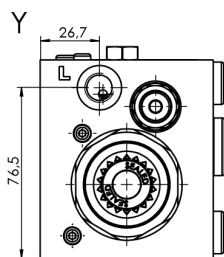
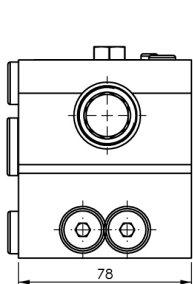
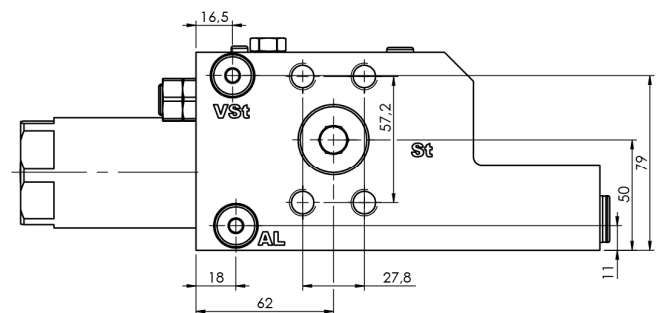
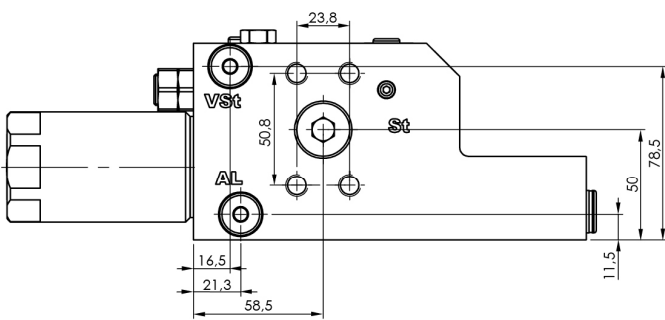
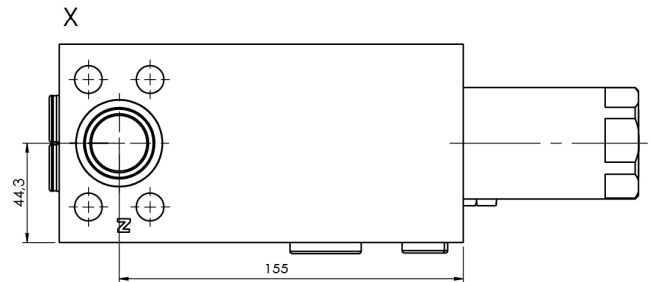
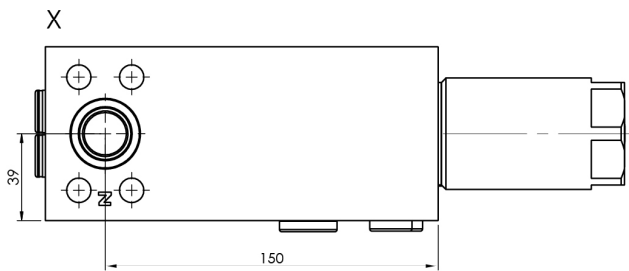
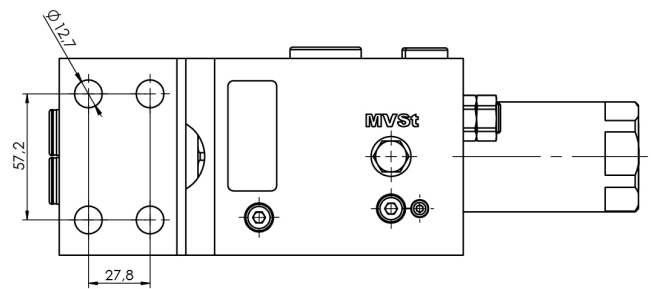
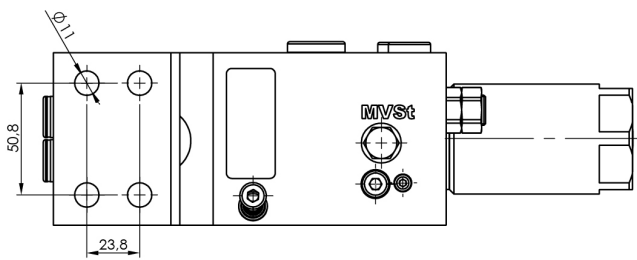
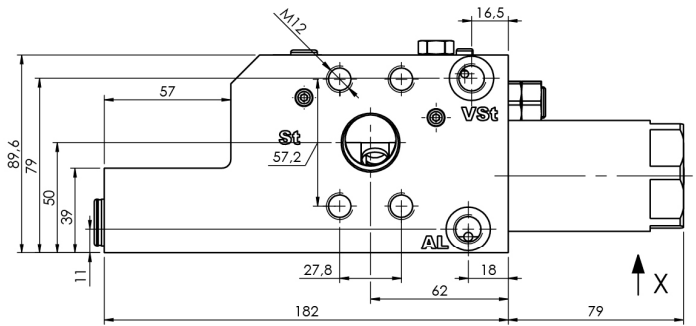


### 6.7 Dimensions

SAE 3/4"



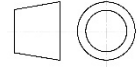
SAE1"



## 7 Notes, Standards and Safety Requirements

### 7.1 General remarks

- The views in drawings are shown in accordance with the European normal projection variant
- A comma ( , ) is used as a decimal point in drawings
- All dimensions are given in mm



### 7.2 Standards

The load control valve complies with standards:

- DIN 24093
- ISO 8643
- EN 474

The following standards are to be observed because of the surface temperatures on the load control valve:

- EN 563, Temperatures on surfaces that can be touched.
- EN 982, Safety-technical requirements for fluid-technical systems and their components.

### 7.3 Safety requirements

- WESSEL-HYDRAULIK GmbH guarantees utilization of standard and proven safety principles in accordance with ISO 13849-2: 2003, Tables C.1 and C.2 for the construction of the valve described here.
- WESSEL-HYDRAULIK GmbH has a certified quality management system in accordance with DIN EN ISO 9001.
- The MTTFd value can be adopted from machine manufacturers with 150 years of experience for the described valve!
- Note: The user is therefore responsible for complying with the fundamental and proven safety principles according to ISO 13849-2: 2003, Tables C.1 and C.2 for the implementation and operation of the hydraulic component!

## 8 Zubehör